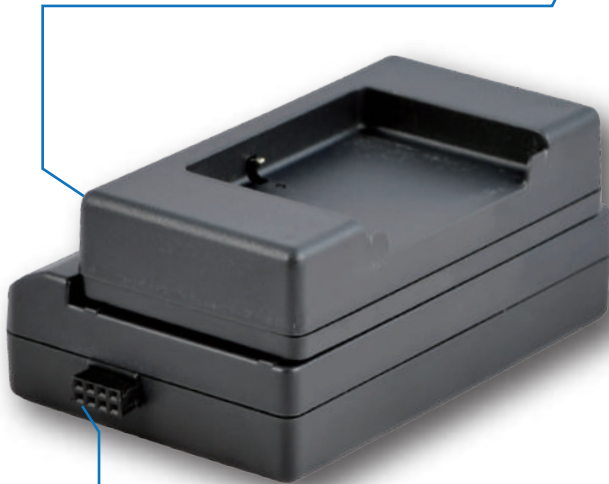


MT-DC-01C lithium-ion battery charger for DT930 / IT600 / IT800 / DTX7 / DTX8 / IT300 battery

Cost Effective Battery Charger Solution

MT-BA2

Battery adapter for IT800 / IT600 battery



Cascade plug

MT-BA1

Battery adapter for DT930 / DTX7 / DTX8 battery



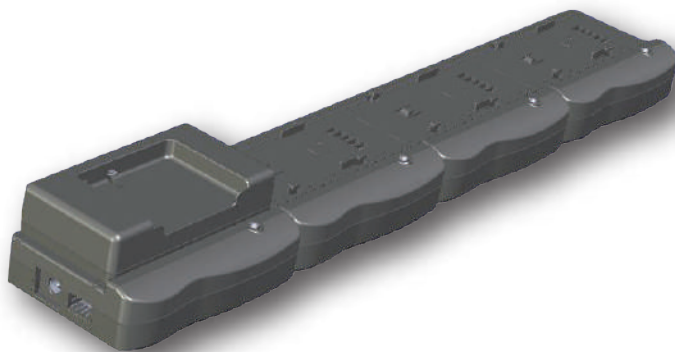
LED Indicator

DC 12V power input

Cascade Socket

MT-DC-01C

Battery Charger Main Unit



Additional Features

- ✓ **Cost effective**
 - Standard battery charger main unit for different 3.7V Lithium-ion battery
- ✓ **Flexible**
 - Exchangeable battery adapter for different battery type
 - Cascade of charger units can become a multi-battery charger
- ✓ Single 12V 2A power adapter can supply Max. 4 units per Cascade chain

MT-DC-01C lithium-ion battery charger for DT930 / IT600 / IT800 / DTX7 / DTX8 / IT300 battery



MT-DC-01C
Battery Charger Main Unit



MT-BA1
Battery adapter for DT930/DTX7/DTX8 battery
(DT923LIB / HA-F20BAT / HA-F21LBAT / HA-K23XLBAT)



MT-BA2
Battery adapter for IT800/IT600 battery
(HA-D20BAT / HA-D21LBAT)

Power Adapter Options



AC/DC Wall Mount Power Adapter 12VDC/2000mA (UK type)
ADA-SAW24-12-2000-W



AC/DC Desktop Power Adapter 12VDC/2000mA
(for overseas countries)
ADA-SAW24-12-2000-D

Specifications

	MT-DC-01C	MT-BA1/MT-BA2
Dimensions and Weight		
Dimension (mm)	101.5(L) x 66(W) x 22(H)	90(L) x 48.5(W) x 20(H)
Weight (g)	70	35
Electrical Characteristic		
Power supply	DC12V, 2A	
Current Consumption	Max. 500mA (Single Unit)	
Charging voltage	4.2V	
Charging current	1A Max.	
Environment		
Operation Temperature Range	0°C to +40°C	
Storage Temperature Range	-20°C to +60°C	
Humidity	10% -90%RH +/-5% (no condensation)	
Indication		
No battery	Red LED on	
Charging	Red LED flashing	
Fully charged	Green LED on	
Operation		
Cascade	Max. 4 units	
Charging time of Casio Battery		
HA-D21LBAT (3700mAh)	Approximate 6 hrs	
HA-D20BAT (1850mAh)	Approximate 3 hrs	

Contact Us: If you have further enquiries, please contact us for more information & discussion.