

eVote - Audience Response System

Instant interactive audience response solution which enhances the interaction between presenter and audience.

Fast and Accurate



Features

- ✓ Instant Audience Responses
- ✓ Real Time Results & Statistics
- ✓ Result Data Exported to Microsoft Excel
- ✓ Plug-and-Play setup
- ✓ User Friendly Software
- ✓ 2.4G Wireless Transmission
- ✓ User ID Registration
- ✓ User ID/Name Mapping
- ✓ Multi Channel
- ✓ Support Up to 500 Users



Applications

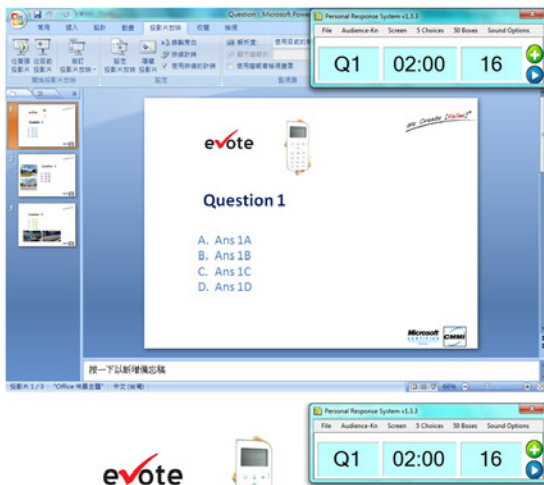
- ↳ Corporate Conference
- ↳ Teaching Environment
- ↳ Examination /Quiz
- ↳ Medical Forum
- ↳ Presentation, Training
- ↳ Seminar, Voting



evote

Instant Audience Responses:

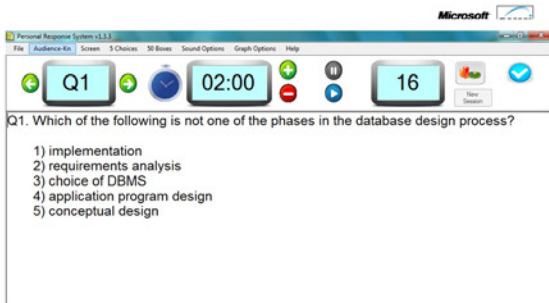
eVote Audience Response System (ARS) allows audiences to participate in presentations, forums or lectures by submitting responses to multiple choice questions.



evote

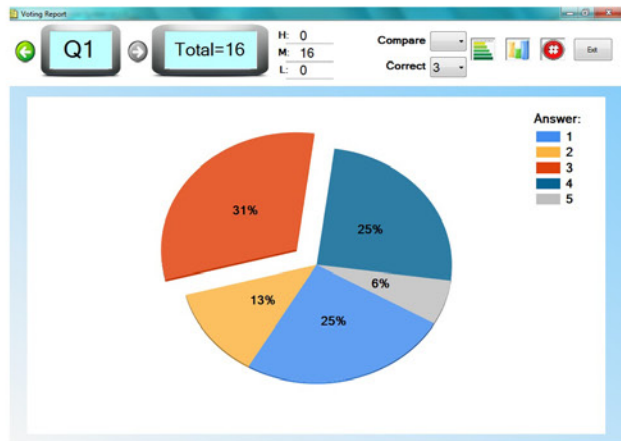
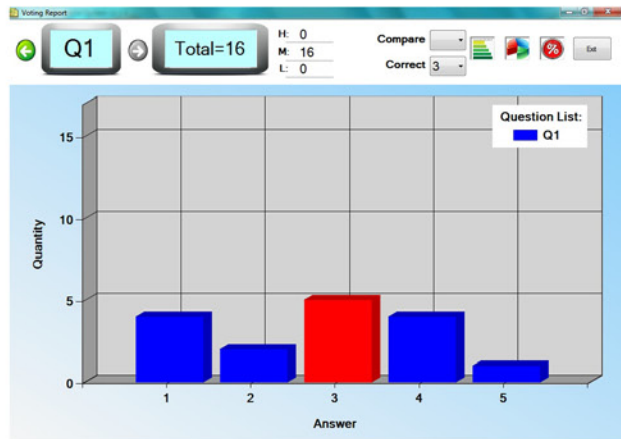
Question 1

- A. Ans 1A
- B. Ans 1B
- C. Ans 1C
- D. Ans 1D



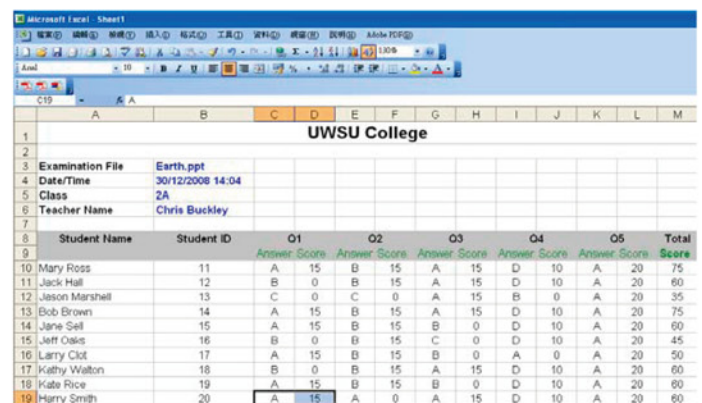
Using eVote your presentations become powerful data collection and assessment tools that collect real-time audience responses and dramatically improves productivity and results for business or educational organization.

Real Time Results & Statistics:



The real time results and statistics can be viewed. Presenter can confirm audience's understanding immediately and thus reinforcement can be achieved.

By Vote / Class Report



UWSU College										
Student Name	Student ID	Q1	Q2	Q3	Q4	Q5	Total			
Mary Ross	11	A 15	B 15	A 15	D 10	A 20	75			
Jack Hall	12	B 0	B 15	A 15	D 10	A 20	60			
Jason Marshall	13	C 0	C 0	A 15	B 0	A 20	35			
Bob Brown	14	A 15	B 15	A 15	D 10	A 20	75			
Jane Sell	15	A 15	B 15	B 0	D 10	A 20	60			
Jeff Oates	16	B 0	B 15	C 0	D 10	A 20	45			
Larry Clot	17	A 15	B 15	B 0	A 0	A 20	50			
Kathy Walton	18	B 0	B 15	A 15	D 10	A 20	60			
Kate Rice	19	A 15	B 15	B 0	D 10	A 20	60			
Harry Smith	20	A 15	A 0	A 15	D 10	A 20	60			

The result data can be exported to Microsoft Excel for reporting and data analysis. With User ID programmed in User Clickers, individuals' progress can also be tracked.



User Clicker

■ Hardware Specification :

User Clicker	
Dimensions	110(L) x 51(W) x 8(H)mm
Weight	43 grams (with batteries)
Battery	2x CR2032 3Volt Lithium Battery
Transmission RF Distance	40 meters
RF Frequency	2.4GHz (10 Channels)



ARS Receiver

ARS Receiver	
Dimensions	Base Diameter 62mm
Power	USB Power
Weight	45 grams
RF Transmission Distance	40 meters
RF Frequency	2.4GHz (10 Channels)



Portable ARS Receiver

Portable ARS	
Dimensions	80(L) x 31.5(W) x 12(H)mm
Power	USB Power
Weight	18 grams
RF Transmission Distance	20 meters
RF Frequency	2.4GHz (10 Channels)

eVote System Configuration



PC/ Notebook

USB

up to 10 meters



ARS Receiver

Plug-and-Play

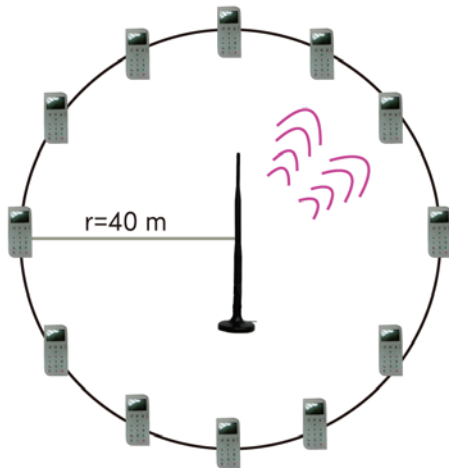


2.4GHz



ARS Receiver

- ✓ up to **500** User Clickers
- ✓ wireless signal coverage radius up to 40 meters



Portable ARS Receiver

- ✓ up to **500** User Clickers
- ✓ wireless signal coverage radius up to 20 meters

